



the largeness
to reduce
the spaces

pure passion



when you have the luxury of more space, it means more than greater comforts.

it does things to you. wonderful things to your mind and heart.

it broadens your horizon. you grow as a person to fill this larger space. correction.

you grow as a personality. and so does every member of your family.

welcome to the largeness of legacy.

absolute 4 bedroom apartments of sheer luxury.



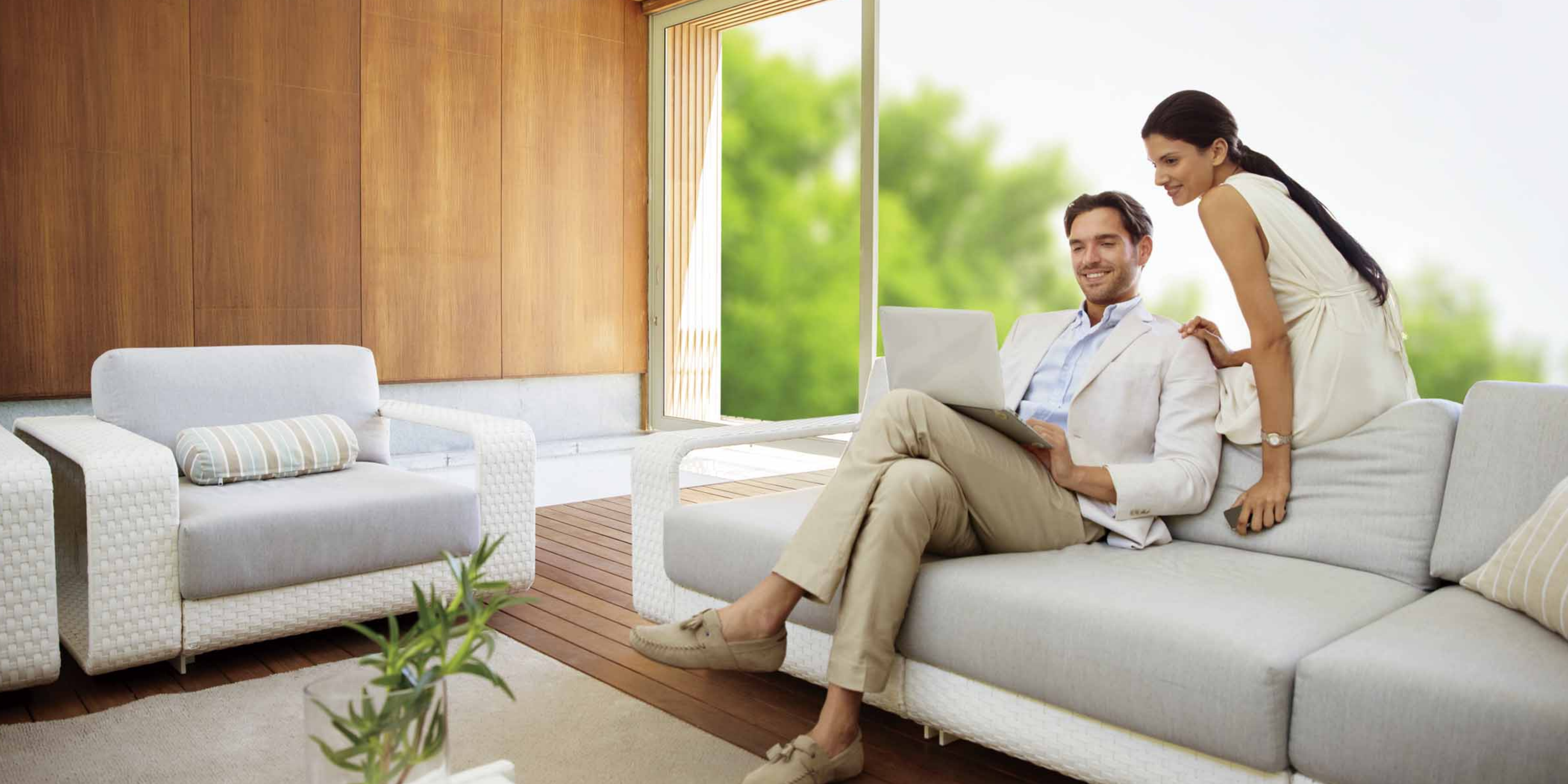
2650*sq. ft. | baner, pune
(246*sq.m.)



more space.
to eliminate the spaces
between you.

at legacy, larger 4 bedroom spaces act as a beautiful breather. for every member of your family. since you don't come in the way of each other, you actually grow meaningfully to enrich each others' lives. in this process you actually come closer.

just to give you an idea of the space: there are no less than 6 toilets. your service staff has separate living quarters. only two apartments are created on each floor.





4 big bedrooms to reinvent your life.

the 4 bedroom living in kasturi offers you a sprawling 2650* sq. ft.(246* sq. m.) infused with all the rare kasturi amenities. planned, created and installed with intense passion. everything you need, in all the space you need, to refresh and reinvent new meaning in your life.





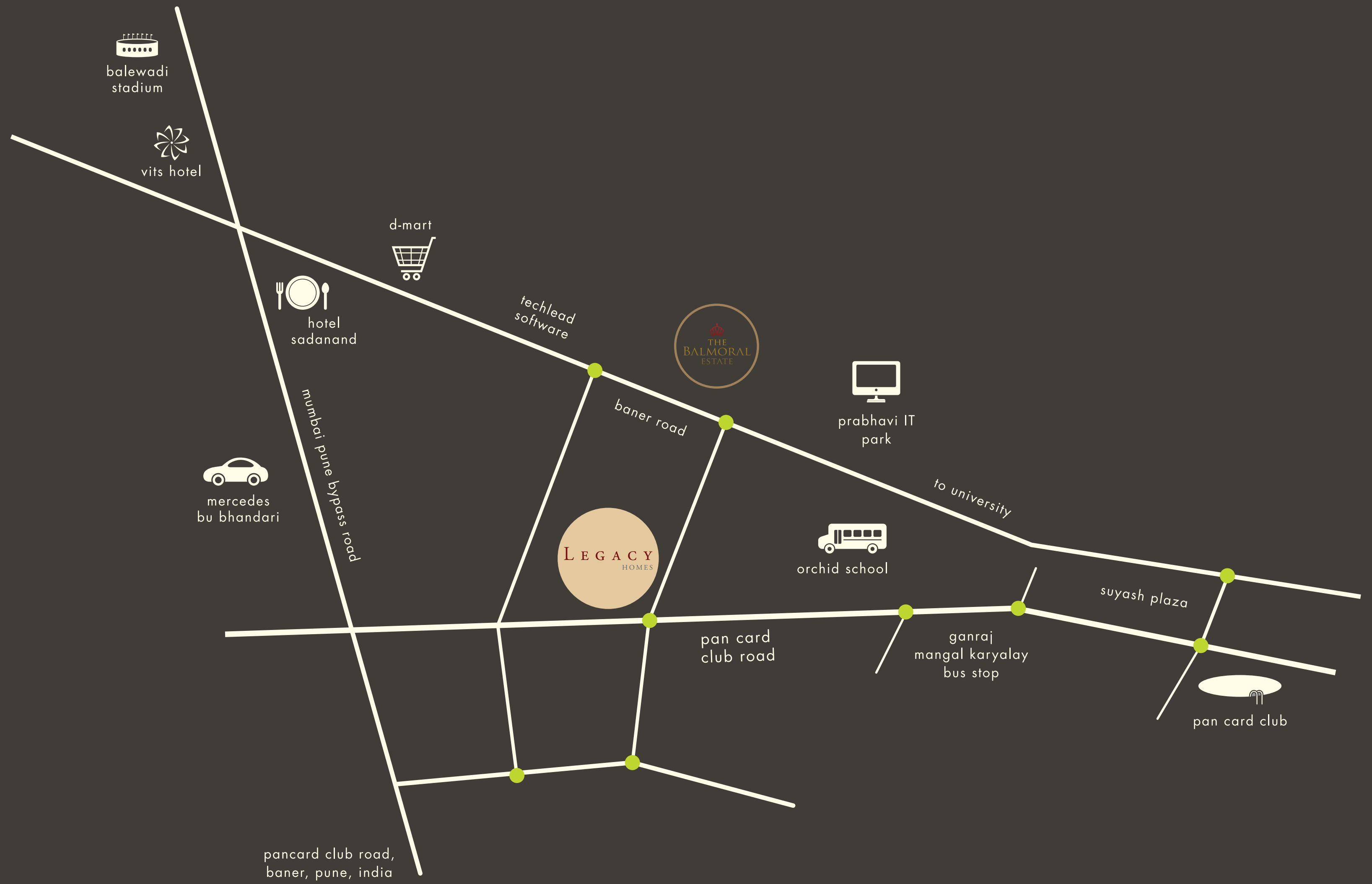
larger space.
located in just the
right place.

baner is the hot favourite destination for the upwardly mobile and young at heart in pune.

it is a vibrant and happening area populated with elegant neighbourhoods, trendy eating spots and international shopping venues. next door to hinjewadi, pune's exciting i.t. sector, baner also happens to be in the path of the mumbai-pune expressway. which makes mumbai a closer neighbour.



- 1. hotel sadanand 1.8 kms
- 2. d-mart 1.5 kms
- 3. orchid school 1.2 kms
- 4. pan card club 1.3 kms
- 5. e square 7.3 kms



balewadi stadium



vits hotel



hotel sadanand



d-mart

techlead software



prabhavi IT park



mercedes bu bhandari



orchid school

to university

suyash plaza

pan card club road

ganraj mangal karyalay bus stop



pan card club



grow together, with the finest amenities and specifications.

to keep life cool and calm, legacy has central vrv/vrf air-conditioned apartments by daikin.

to let you enjoy whipping up meals together, there is a fully furnished designer german kitchen, complete with hob, chimney and microwave. and a dishwasher, to help you tidy up later.

to make bathing a joyful act of rejuvenation, you have designer bathrooms equipped with villeroy & boch fittings, viega plumbing systems and false ceilings by hunter douglas, usa.

and to make the ground beneath your feet absolutely wonderful, you have engineered two wooden flooring by par-ky, belgium, and carrara marble from italy.

the legacy life is also a safe life, ensured with the latest german locking systems.





large-hearted facilities for larger-than-life living.

Legacy has been laid out and designed for a luxurious lifestyle.

both within your home, and within the complex. the swimming pool,

health and fitness centre have been placed at carefully chosen

areas, to heighten relaxation and promote an evolved experience.

the designer lobbies with a magnificent guest lounge,

set a precedent for the regal experience to follow.

hygiene factors like 100% power back-up, piped gas

and garbage chute have been given careful attention too.





larger values like sensitivity. to share with all around you.

once you live in the luxurious and large environs of legacy, it is also important to maintain the stupendous standards that you will get used to.

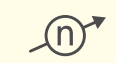
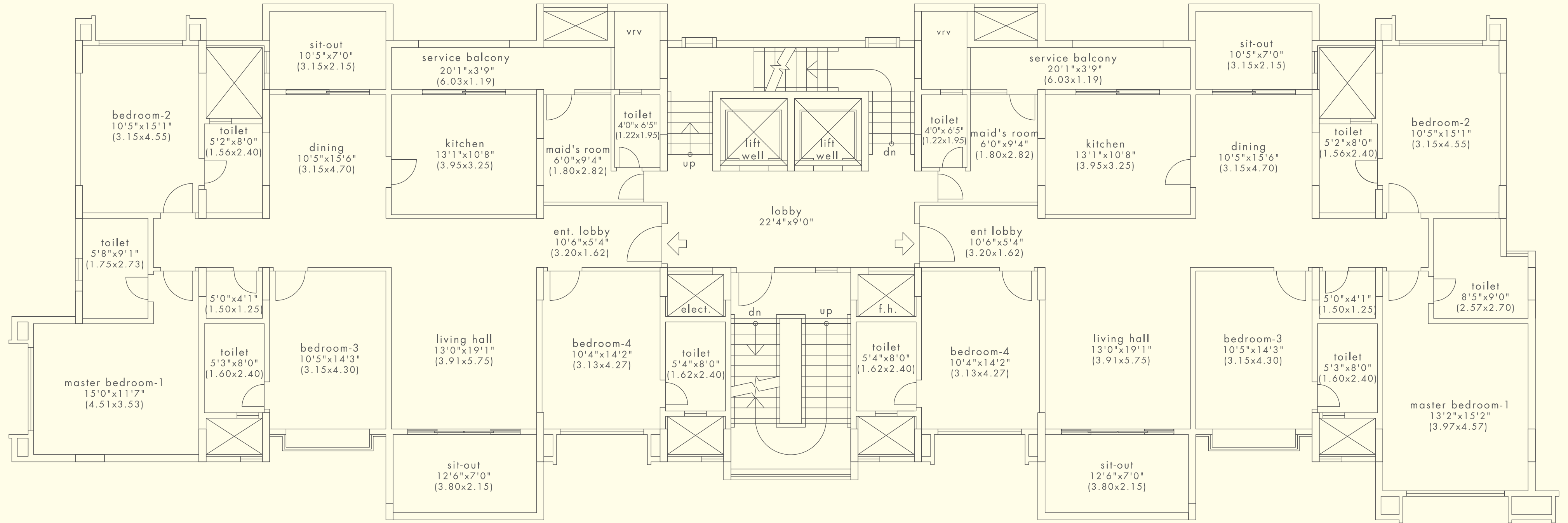
and hence, air-conditioning, ducting, wiring, plumbing etc. have been completely thought through. italian carrara marble flooring and scandinavian wooden decks have also been already provided. there is a code of conduct laid down, based on sensitivity towards our neighbours, wherein residents are expected to respect existing arrangements. things like shifting of walls, erecting of new walls, changing of flooring within apartments is a strict no-no. all of this will ensure we honour each other with sensitivity as well as maintain the legacy of beautiful spaces you have for each other.



legacy from kasturi. pure passion for the larger benefit.

we are kasturi, pune's niche luxury real estate brand. our passion lives and breathes in over 1100 homes that we have delivered across pune. the fine homes we design are enriched with absolute passion and flamboyance.

we have created legacy with rare luxuries and large spaces. emblazoned with the world's most envious brands. so that your family genuinely enjoys staying close to each other.

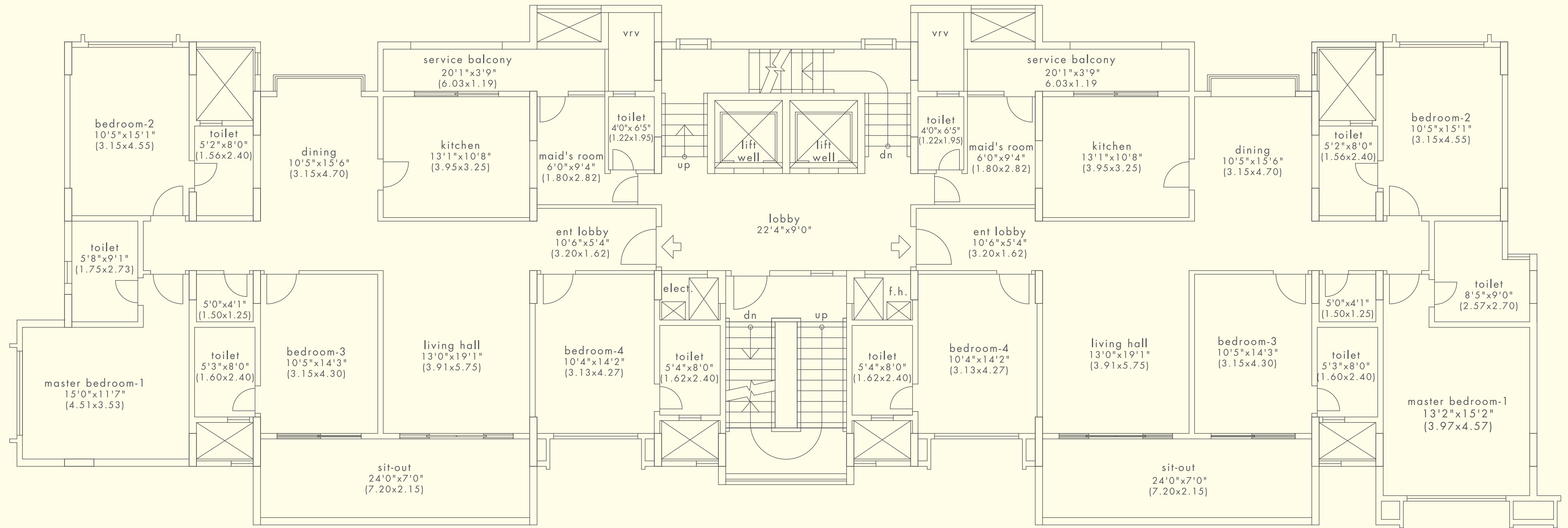


*the even floor carpet area is 1930 - 1965 sq. ft. (179 - 182 sq.m.)

*area mentioned above is approximate carpet area



floor layout for level 2, 4, 6 & 8



*the odd floor carpet area is 1930 - 1965 sq. ft. (179 - 182 sq.m.)

*area mentioned above is approximate carpet area

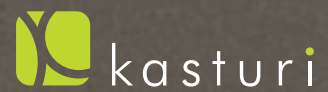


floor layout for level 3, 5, 7 & 9



this brochure is an imaginary concept and the plans are subject to changes as per the sanctioning authorities. nature and location of all amenities and proposed development shown in proposed master plan can be added, omitted or shifted as per developers discretion. the information given herein is presented as general information about the project and no representation or warranty is expressly or impliedly given as to its accuracy, completeness or correctness. terms & conditions as applicable.

legacy. absolute 4 bedroom luxury.



corporate office

1 adams court, 2nd floor, opp. hotel mahabaleshwar,
baner road, pune 411 045, india
t + 91 20 4077 9900, m + 91 95456 36000,
sales@kasturi.com

mumbai office

204 makhija chambers, 2nd floor, turner road,
bandra (w), mumbai 400 050, india
m + 91 95457 53300, m + 91 95450 16888

www.kasturi.com